



**QUIVOGNE**

**SCD**

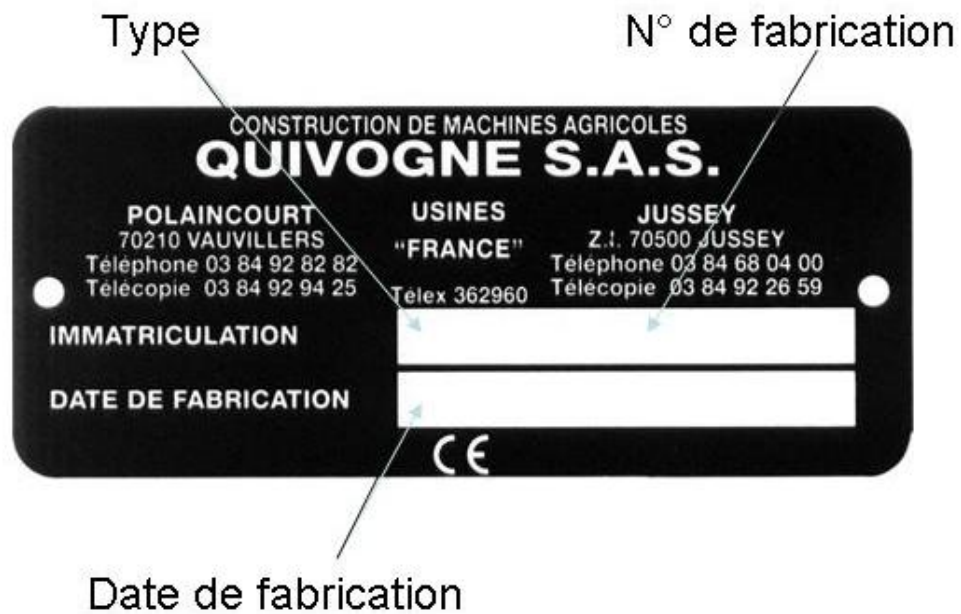
**Operating, Maintenance  
& Spare Parts Book**

**Quivogne UK Ltd.  
Fen Farm,  
Washbrook,  
Ipswich,  
Suffolk.  
IP8 3HE**

**Tel: 01473 730 576  
Fax: 01473 730 681  
web: [www.quivogne.co.uk](http://www.quivogne.co.uk)  
e-mail: [info@quivogne.co.uk](mailto:info@quivogne.co.uk)**

## MACHINE DETAILS

Model	
Serial Number	
Date Of Manufacture	



## **TECHNICAL ADVICE FOR SAFETY** **MACHINE DESIGNED FOR AGRICULTURAL USE**

Please read the advice given below before starting to operate. This machine is designed for agricultural use only. If used in a different capacity we will not be held responsible and the user will be responsible for his own actions.

People using the machine must be advised of the dangers. Comply with accidental protection notices, with work medical regulations with the road traffic regulations with the European Community regulations "Agricultural Machine Instructions". Any technical modification will be without the agreement of the manufacturer and we will not be held liable for the risks.

### **GENERAL BASIC RULES - SAFETY INSTRUCTIONS - ACCIDENT PROTECTION**

Before each working session please ensure that the machine and tractor are in good working order.

1. Comply with the advice and safety instructions described in the operating book.
2. Read the stickers on the machine as they give important information.
3. Comply with safety instructions and the Road Traffic Regulations at the time of each use.
4. Read the operating book carefully before using the machine.
5. Avoid wearing loose clothing near the machine as it could be caught on the PTO shaft, rotors etc.
6. To avoid all risks of fire and premature corrosion keep the machine clean.
7. Make sure that no person stands near the machine before driving and working.
8. Never carry people on the machine. Do not stay on the machine in transport position or when in working position.
9. Only use the equipment provided by the manufacturer to couple the machine.
10. Couple the machine on the tractor, raise the machine carefully to avoid risks of accidents.
11. Always take into consideration the weight and width of the machine on the road.
12. Always set the lighting system, signal system and transport locks for road transportation.
13. Leave the semi-automatic coupling ropes loose so as to avoid the release of the locking system during transport.
14. Do not leave a moving tractor unattended. Stop the engine, disengage the PTO shaft and put on the handbrake.
15. When you steer to couple the machine make sure the braking capacity is sufficient – the braking is influenced by the weight of the machine coupled on the tractor.
16. In transport pay attention to the weight transfer when turning sharp corners and other road obstacles.
17. Only use the machine when all the safety and protection requirements have been followed.
18. Stop the machine immediately when someone arrives on or near the work area.
19. Put the machine on the ground, stop the engine, put the handbrake on and take the key out of the tractor before leaving it.
20. Do not stand between the tractor and the machine if they are not completely stabilized.
21. Do not use the machine if tired, under the influence of alcohol or on drugs.
22. Keep the reflective apparatus clean on the front and rear of machine.

### **MOUNTED MACHINE:**

1. Make sure that the lifting system is working smoothly before coupling the machine on the tractor linkage.
2. Make sure the linkage category of the machine is the same as that of the tractor.
3. Be careful when standing near the linkage system area. There are risks of crushing and cutting.
4. Do not stand between the machine and the tractor during the coupling and when you fit the top link.
5. Adjust the check chains of the linkage of the tractor to avoid excessive sway.
6. In transport lock the operating lever of the linkage.
7. Set the lighting apparatus, signal system and required precautions for transport on the road.
8. Put on the safety pin and release the locking system in transport position.
9. Check the following regularly: axles, lynch pins, articulation pins, linkage bar.

### **SEMI MOUNTED & TRAILED MACHINES:**

1. Make sure that the drawbar, turning link, fix link and hook is in good working order.
2. Check the connection to the tractor: linkage pins, hook, axles, pins etc.
3. Do not stand between the tractor and the machine at the time of coupling.
4. Never attach a trailed machine to the top link hitch point of the tractor  
-SERIOUS RISK OF OVERTURNING
5. Regularly check and clean the hydraulic pipe connection, rams safety valves on the road etc.
6. In transport put on the safety pins and release the locking system.
7. In transport close the safety valves of the lifting rams of the machine.
8. When transporting drive carefully on the road especially on sharp curves and on bridges etc.
9. Set up lights, signal systems and transport locks for road transportation.
10. Do not uncouple the machine when on sloping ground. If necessary place a securing block behind the wheel.
11. Before leaving the tractor uncouple the machine. Lay the machine on the ground or on the support stand.
12. Open and close on a flat area with the tractor running at low revs.

### **MACHINE WITH HYDRAULIC EQUIPMENT:**

1. Check the hydraulic kit, pipes, connections and valves are all in smooth working order before use.
2. Read the setting up procedure before use as shown herewith.
3. Before use fill up the hydraulic circuit by moving the spool valve of the tractor.
4. Keep people away from the driving area and be careful with large unfolding machines.
5. IMPORTANT - In transport close the safety valves of the rams.
6. On vertical and lateral folding machines put all release pins on.
7. Do not attempt to execute more than one operation at a time. Wait for one to finish before starting another.
8. Carry out all the operations on a flat surface with the tractor running at low revs. Leave the machine on a flat area.

## **PTO SHAFT:**

1. Use the PTO shaft recommended by the manufacturer, which has a CE Mark.
2. Keep the guards and covers on the PTO Shaft.
3. At all times be careful with the PTO Shaft.
4. Never attach the PTO when the machine is lifted.
5. Lift the PTO Shaft to check that the guards move freely and cover the shaft.
6. IMPORTANT - Secure the chains of the PTO Shaft to ensure protection.
7. Before connecting the PTO Shaft make sure the RPM is the same as the machine.
8. When engaging the PTO Shaft ensure that no person is standing near the machine.
9. Never engage the PTO when the engine is a stopped or running at high rev.
10. Ensure that no person stands near the moving parts of the machine.
11. Do not allow hands, feet or any other part of the body near the moving parts of the machine.
12. Disengage the PTO Shaft if the work becomes too much for the machine - DO NOT OVERSTRAIN THE PTO.
13. Do not stand near the working machine even if the tractor PTO is disengaged WAIT FOR ALL MOVING PARTS TO STOP.
14. Carry out maintenance, greasing, cleaning and all other necessary work when the PTO Shaft is disconnected, the engine is stopped, the key away and the machine is stabilized.
15. Position the disconnected PTO Shaft on supports in order to avoid damage when in transport.
16. IMPORTANT - Always replace a broken or defective part by an original part, which has a CE Mark.

## **MAINTENANCE:**

1. Carry out all maintenance, greasing, cleaning and any other work on the machine ONLY when the machine is stopped, stabilized, engine stopped, handbrake on and key out.
2. Regularly check the bolts, linkage, link pin, articulation axles, wearing parts often. Tighten them regularly and if necessary replace them with original parts.
3. For all work that needs to be carried out under the machine make sure the unit is wedged and supported carefully to avoid the risk of crushing. Take care with all parts that could fall or uncouple from the machine when this maintenance is being carried out.
4. Wear gloves for all work that needs to be carried out on the machine. Be careful on sharp edges.
5. Before undertaking greasing clean carefully the surplus grease and oil.
6. Before all welding operations on the machine when it is coupled with the tractor disconnect the cables of the battery.
7. Always replace the wearing parts or damaged parts with original ones.

## WARNING & INFORMATION STICKERS ON THE MACHINE

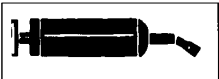


Before leaving the tractor for any operation on the machine, stop the engine and wait for the complete stop of any moving parts

Before starting to operate the machine read the advice and safety instructions given in the handbook. Before each use, check all the protection devices and tightness of bolts.

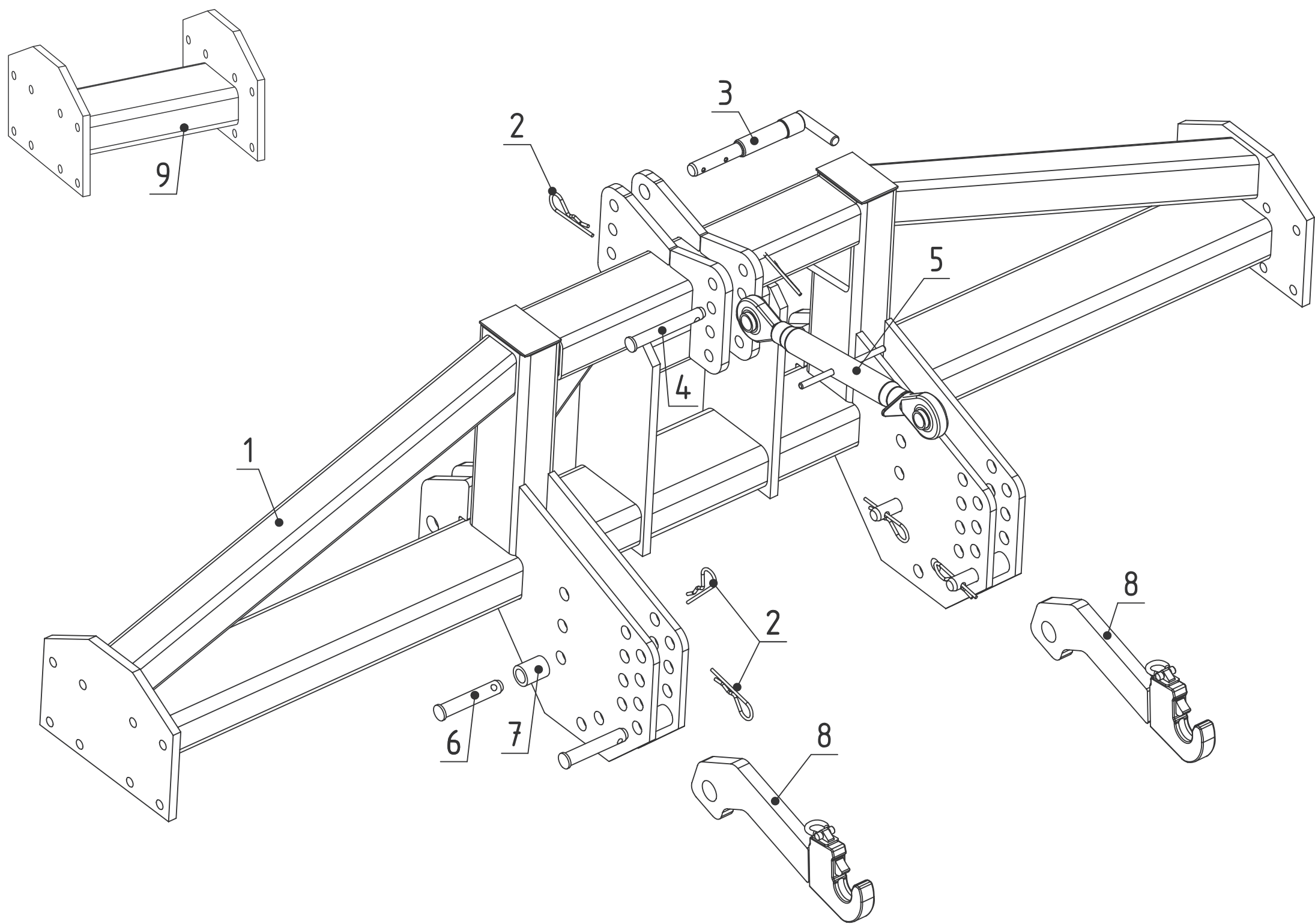
<b>GRAISSAGE</b> · Pailiers toutes les 6 heures · Autres graisseurs toutes les 20 heures	<b>BOULONNERIE</b> · Vérification de la boulonnerie après 1 heure d'utilisation, et ensuite, toutes les 20 heures
<b>GREASING</b> · Bearings every 6 hours · Other grease nipples every 20 hours	<b>BOLTING</b> · Checking after the 1st hour using than, every 20 hours
<b>SCHMIERUNG</b> · Lager alle 6 Stunden · Andere Schmiernippeln alle 20 Stunden	<b>SCHRAUBEN</b> · Überprüfung den Schrauben nach erster Stunde Verwendung, dann alle 20 Stunden

Outlines the greasing instructions and frequency for tightening bolts.



Indicates where grease nipples are located that need greasing.

# Parts Book

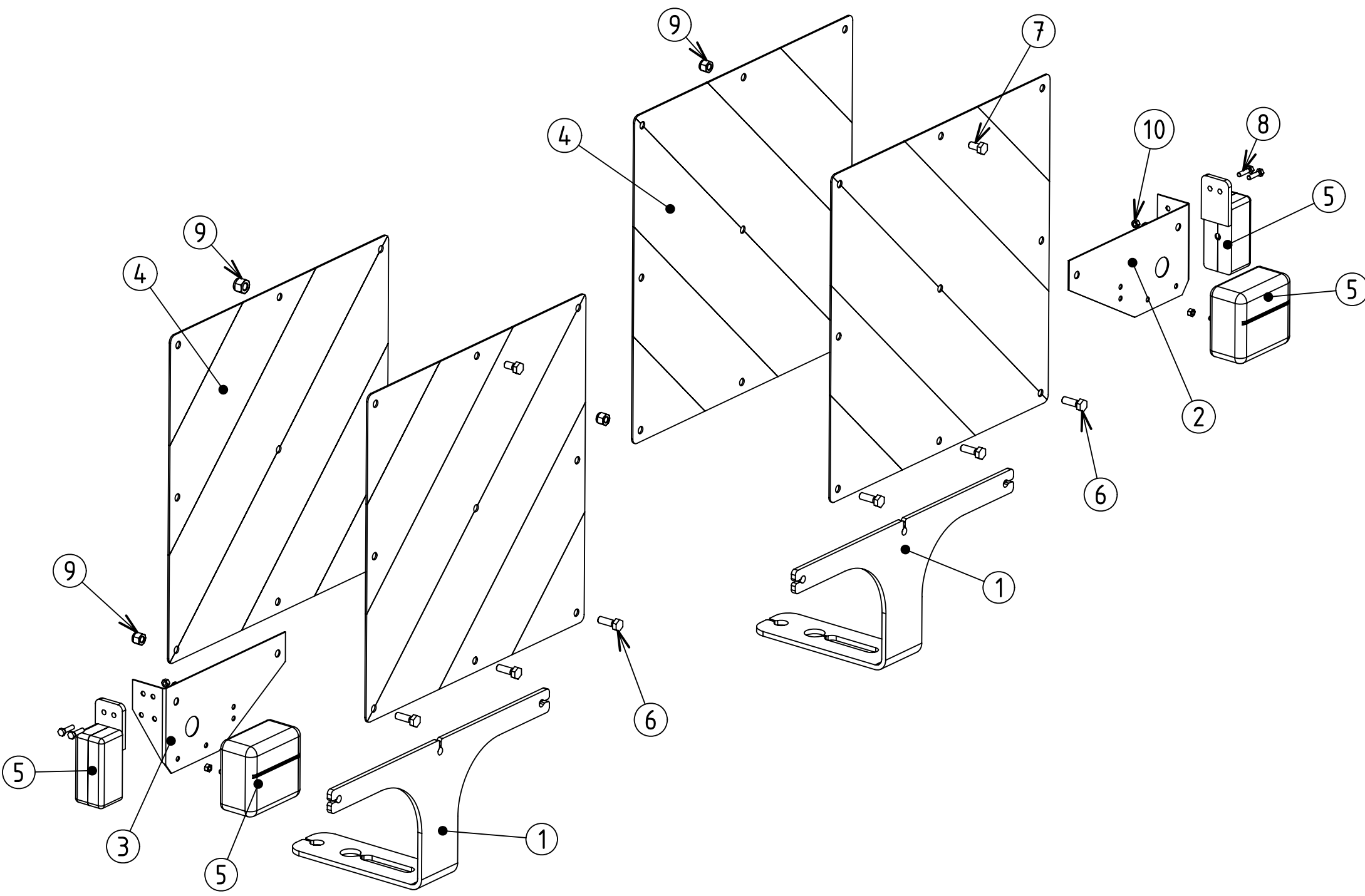




Rep.	Description	Code
1	Frame	SSO00300
2	R clip	GOU06000
3	Pin	BRO36501
4	Pin Ø25X180	AXE25036
5	Top link	BAR25020
6	Pin	AXE28006
7	Bush	BAG03009
8	Arm	SSO00322
9	Extension tube	SSO00309



Rep.	Description	Code
1	Nut M16	ECR16002
2	Crank	RDL03060
3	Screw 16x40	VIS16004
4	Linkage	RDL03070
5	Screw 24x170	VIS24008
6	Bracket	RDL03181
7	Nut M24	ECR24003
8	Adjusting Pin	TMA00001
9	Nut M24	ECR24003
10	Leg	PLL00001
11	Shear bolt	PLS00001
12	Nut M14	ECR14002
13	Pivot bolt	PLP00001
14	Nut M20	ECR20003
15	Foot	PLF00001
16	Weld on Tip	TMP00001
17	Weld on Wing with Tip	TMW00001
18	Bolt M20x50	VIS20002
19	Stand holder	SSO00107
20	Securing pin	CLE01603
21	Stand	BEQ04519
22	R-clip	GOU04000
23	Nut M20	ECR20003



Rep.	Description	Code
1	Mounting bracket	KHR00925
2	Light plate right hand	KHR00906
3	Light plate left hand	KHR00907
4	Reflector plates	KHR00920
5	Rear lamps complete	KIT00999
6	Bottom bolts M8x25	VIS08028
7	Top bolts M8x16	VIS08027
8	Side bolts M5x20	VIS05001
9	Nut M8	ECR08001
10	Nut M5	ECR05000